

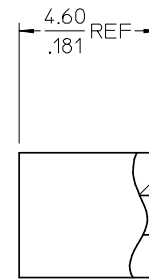
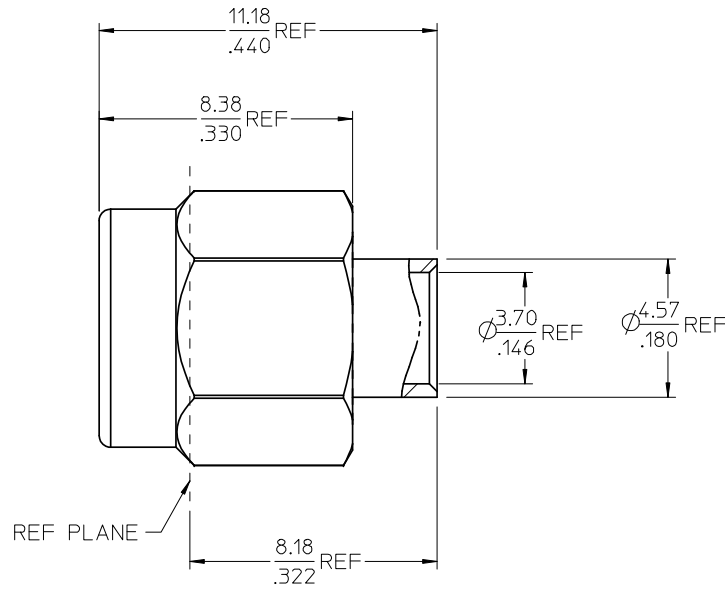
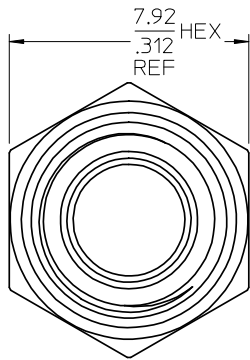
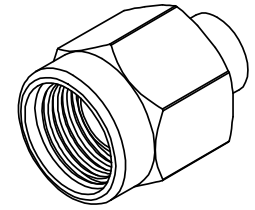
MATERIALS AND FINISHES

BODY STAINLESS STEEL  
PLATED GOLD (SEE TABLE)

COUPLING NUT STAINLESS STEEL  
PASSIVATED

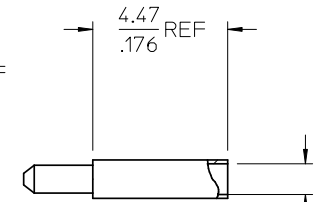
CENTER CONTACT BRASS  
PLATED GOLD (30 MICROINCHES MIN)

INSULATOR TEFLON



INSULATOR

$\phi$  1.30  
.051 REF



CONTACT

PS-89675-1100	ELECTRO/MECH PERFORM.
ES-89675-1520	CABLE ASSY. INSTR.
MIL-STD-348A, FIG. 310.1	INTERFACE
SPECIFICATION	DESCRIPTION

73251-0033	BY BAG	30 MICROINCHES
73251-0032	BY TRAY (20 CAV)	10 MICROINCHES
73251-0031	BY BAG	10 MICROINCHES
PART NO.	PACKAGING	FINISH THICKNESS

CHG: ADDED P/N 73251-0033	EC NO: URF2009-0073	DRWN:ROBERTSON 2008/08/11	CHKD:SSS 2008/08/11	APPR:JWIENER 2008/08/12
REV	DESCRIPTION	QUALITY SYMBOLS		
A4		▽=0	▽=0	

GENERAL TOLERANCES (UNLESS SPECIFIED)	DIMENSION STYLE	SCALE	DESIGN UNITS	THIRD ANGLE PROJECTION
	MM/IN		METRIC	
4 PLACES ± .005 ± .005	DRAWN BY	DATE	TITLE	
3 PLACES ± .005 ± .005	NB J	1997/12/01	SMA PLUG, SOLDER TYPE FOR RG402 CABLE, 50 OHMS SMA-PC	
2 PLACES ± .005 ± .005	CHECKED BY	DATE	MOLEX MOLEX INCORPORATED	
1 PLACE ± .005 ± .005	DHG	1998/01/05	SD-73251-003	
ANGULAR ± 1°	APPROVED BY	DATE	SHEET NO.	
	GMH	1998/01/06	1 OF 1	
DRAFT WHERE APPLICABLE MUST REMAIN WITHIN DIMENSIONS	MATERIAL NO.	DOCUMENT NO.		
	SEE TABLE			
	SIZE	THIS DRAWING CONTAINS INFORMATION THAT IS PROPRIETARY TO MOLEX INCORPORATED AND SHOULD NOT BE USED WITHOUT WRITTEN PERMISSION		
	C			